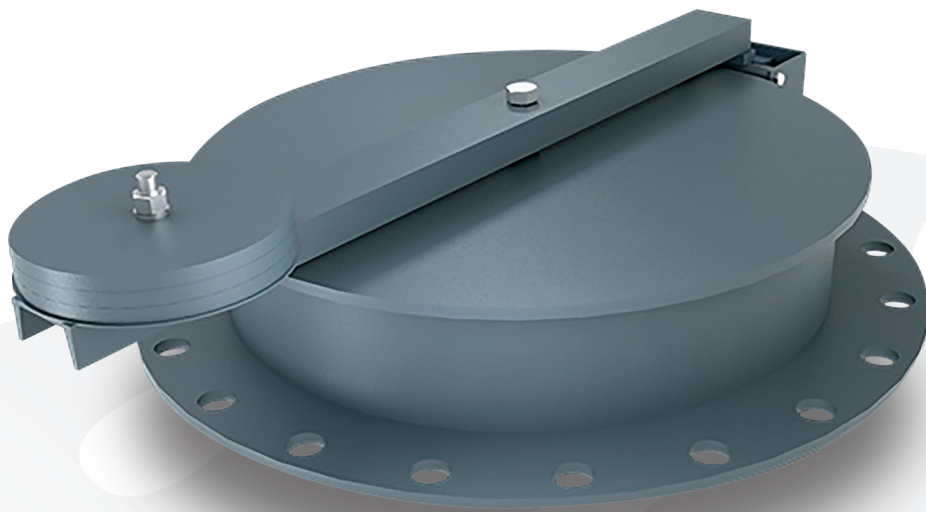




IN BUSINESS



Series 51700

Installation, Operation, and Maintenance Instructions

Installation Procedure

- Remove and discard all protective packaging material from on or inside the vent. Remove and discard cardboard and tape from the pallet assembly. This cardboard protects the diaphragm during shipment.
- Check carefully to insure that no packing or protective materials remain on or inside the vent base or the pallet assembly.
- Mount the vent to the appropriate tank flange using gaskets compatible with service conditions. For best performance, the vent should be mounted level so that the seating surfaces are no more than 1° off horizontal. Make sure that the pallet assembly is free to hinge open and to reclose.
- If a setting weight is provided it is to be mounted on the lever arm assembly of the vent. Locate mounting hole on end of lever arm. Position platform disc on lever arm aligning holes. Install weight(s) on platform. Insert supplied stud and assemble with washers & nuts. Tighten fastener securely, using a recommended torque value of 50 ft. lb. (+/- 5 ft. lb.).
- When tank pressure exceeds the vent set pressure, the pallet assembly will hinge open as required to flow vapors and relieve the pressure. When the pressure is reduced, the pallet assembly will automatically return to its closed position.

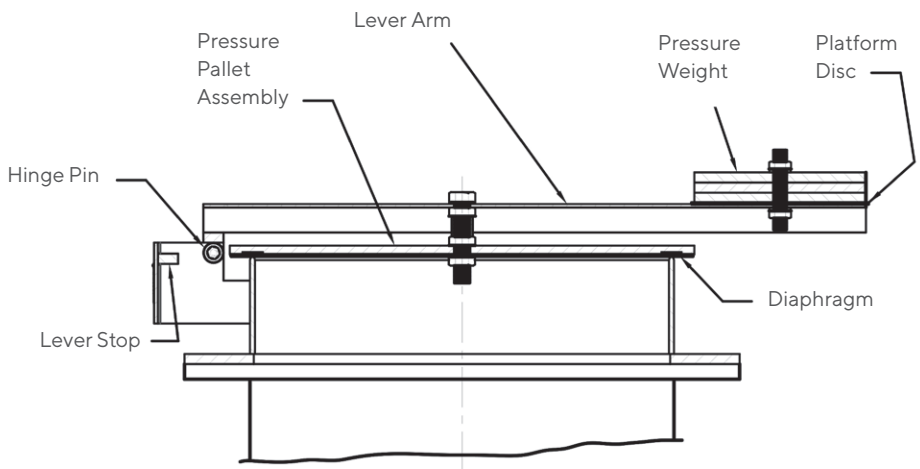
NOTE:

When pressure loading weights are included with a unit they may be shipped separately to avoid damage to the unit. The weight(s) should be inspected, properly identified and set aside for later installation.

Caution!

If any questions arise concerning the proper installation or maintenance of our products, please contact Protectoseal or one of our Authorized Representatives.

When installing any Protectoseal device, the legal, corporate and advisory safety regulations and procedures appropriate for the specific installation site must be fully understood and followed.



Maintenance

Protectoseal recommends that our products be inspected and maintained according to the normal maintenance schedule of the facility. At a minimum, maintenance should be conducted annually. More frequent maintenance may be required, and should be scheduled, for unusual service conditions.

Caution!

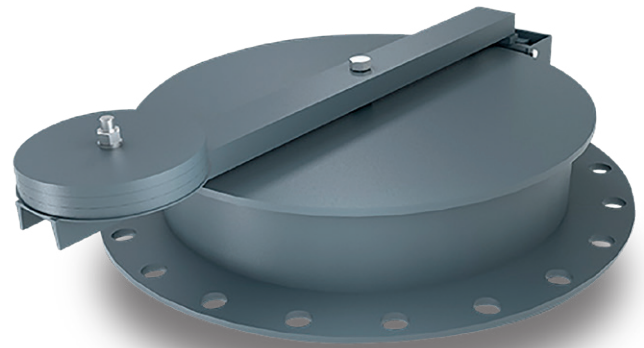
When maintaining any Protectoseal device, the legal, corporate and advisory safety regulations and procedures appropriate for the specific installation site must be fully understood and followed.

Caution!

Tank vapor space pressure or vacuum should be relieved before any maintenance operations are undertaken.

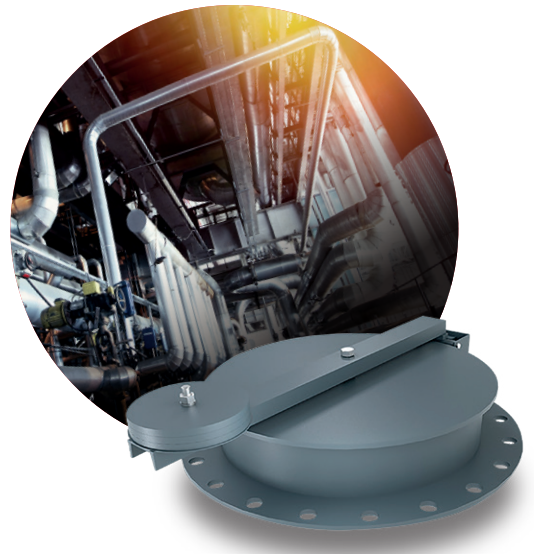
Caution!

Do not use a file or other sharp tool to clean the seating surface.



Maintenance Procedure:

- Open the pallet assembly fully by lifting lever arm. Pallet will rotate open about hinge center. NOTE: Depending on the set point of the vent, the weight of the pallet, lever arm and weight combination may be significant – exercise caution.
- Remove any loose dirt or foreign material from the seating surface and from the pallet assembly.
- Inspect and clean the machined seating surface of the base with a suitable cleaning fluid. The seat should be free of nicks, marks or accumulations of foreign material.
- Inspect the pallet assembly. If the pallet is deteriorated or bent, it must be replaced. Inspect the diaphragm material in the pallet assembly. The diaphragm must be clean, flat and smooth. If the diaphragm material is deteriorated, it must be replaced. The diaphragm can be replaced by loosening the fastener that secures the diaphragm and retaining washer. Remove the washer to expose the diaphragm. Install a new diaphragm, reposition the retaining washer and secure the retaining nut.
- Remove any temporary bracing and slowly lower the pallet assembly to its closed position.



For Safety, Efficiency and Environmental Protection

■ Pressure/Vacuum Relief Vents

Pallets open and close to permit only the intake or outlet relief necessary to stay within permissible working pressures and avoid damage to tank.

■ Pipe-Away Relief Vents

Pressure/Vacuum relief for applications that require hazardous vapors to be processed into manifolded piping and not released into the atmosphere.

■ Emergency Vents

Protect tanks against rupture or explosion resulting from excessive internal pressure caused by exposure to fires. PIN-TECH® units featuring <500 ppm leakage available.

■ Flame Arresters

Prevent external flame entry into storage or processing tanks via vent opening.

■ Detonation Arresters

Withstand and arrest high velocity and pressure flame fronts approaching from either direction in closed or manifolded piping systems.

■ Tank Blanketing Valves

Control the flow of an inert gas into the vapor space of a storage tank so that the tank pressure can be maintained within an acceptable range.

Contact Protectoseal today to learn more
about our safety solutions and how our
maintenance services can keep your operations
secure and compliant.



The Protectoseal Company
(Headquarters)

✉ info@protectoseal.com

☎ 1.630.595.0800

🌐 www.protectoseal.com



Elmac Technologies Ltd.
T/A Protectoseal

✉ enquiries@protectoseal.uk

☎ +44 1352 717 560

🌐 www.protectoseal.com



Elmac Envisafe Technologies
Pvt. Ltd. T/A Protectoseal

✉ sales.eet@protectoseal.in

☎ +91 22 4100 6998

🌐 www.protectoseal.com